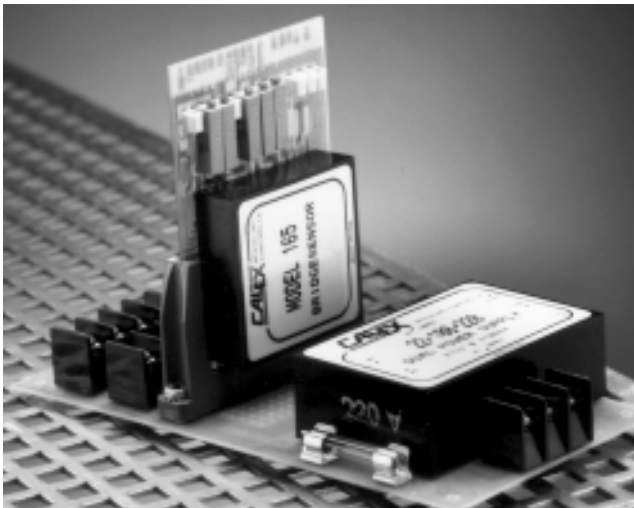


Model 22-100MK



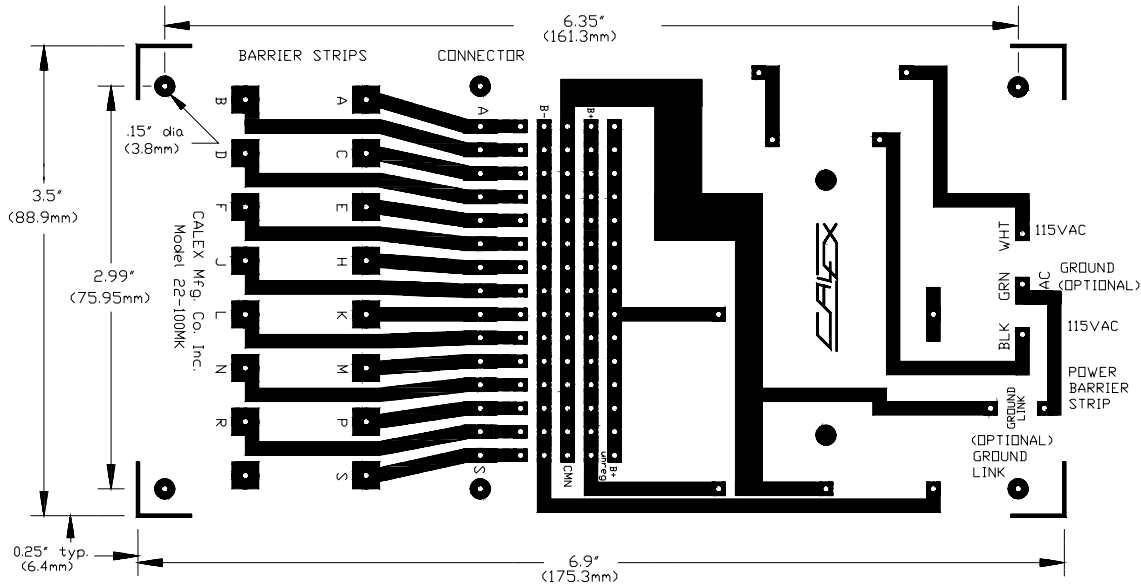
Description

The CALEX "MK" power supply series is designed to eliminate many of the power supply-function module interconnection problems. Both the power supply and function module can be mounted on the same board. All the connections are readily programmed on the PC board. The external connections are easily made with a screwdriver.

Applications

- Use with any Function Module and PC Board designed for insertion into a 15-pin connector.
- Plug-in power available for your custom circuits.
- Useful where modules are constantly interchanged.

Mechanical Specifications



Bottom View Model 22-100MK

Specifications

22-100MK			
Output		Input	
Output Voltage	±15V ±24V unreg.	Input Voltage	115 VAC (other voltages available)
Output Current	±100 mA (1)	Frequency Range (3)	50 to 60 Hz
Voltage Accuracy	±0.5%	Isolation - Res. Cap.	50 megohm 600 pF
Regulation		Temperature	
Line Reg. (±10%)	±0.01%	Operating (2)	0° to 65°C
Load Reg. (NL to FL)	±0.01%	Size (L x W x H)	
Output Imp. @ 10kHz	0.5 ohm	6.9" x 3.5" x 2.2" including 15 pin connector	
Stability		Weight	
Temp. Coefficient	±0.01%/°C	15 ounces	
Noise & Ripple	1 mVRMS		

(1) This is the total rated output. The sum of the unregulated output current plus the regulated output current must be less than the total output current.

- (2) Derate at 3 mA/°C above +40°C
 (3) For 50 Hz derate current 50%